

Ordering Information

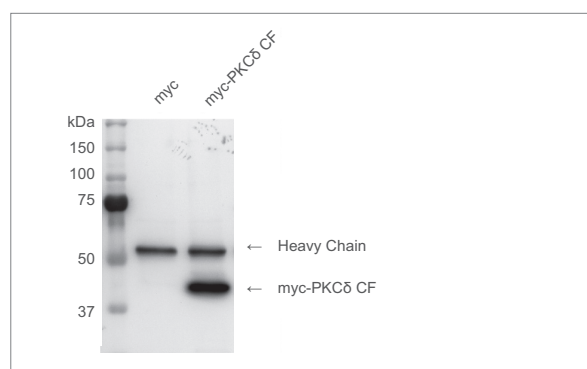
Product Name	Application	Storage	Product No.	PKG Size
Anti-c-Myc (Mouse IgG1-k), Monoclonal (MC045)	WB, IP, ICC, ELISA	R	04362-76	50 µg
			04362-34	200 µg
Anti-GFP (Mouse IgG1-k), Monoclonal (GF200)	WB, ELISA	R	04363-66	50 µg
			04363-24	200 µg
Anti-GFP (Rat IgG2a), Monoclonal (GF090R)	WB, IHC ELISA	R	04404-26	50 µg
			04404-84	200 µg
Anti-GST (Mouse IgG2a-k), Monoclonal (GS019)	WB, IP ELISA	R	04435-84	50 µg
			04435-26	200 µg
Anti-HA (Mouse IgG1-k), Monoclonal (HA124)	WB, ELISA	R	06340-96	50 µg
			06340-54	200 µg
Anti-6xHis (Mouse IgG1-k), Monoclonal (HI192)	WB, ELISA	R	04428-26	50 µg
			04428-84	200 µg
Anti-V5 (Mouse IgG1-k), Monoclonal (V5005)	WB, IP ELISA	R	04434-94	50 µg
			04434-36	200 µg
Anti-DYKDDDDK (Mouse IgG2b-κ), Mono	WB, IP IF, ELISA	F	NU01102	200 µg

[Storage] R = Refrigerator, F = Freezer

Labeled Epitope Tag Antibody

• Anti-c-Myc, Agarose Conjugate

Western Blotting



Clone : MC045
 Isotype : IgG1a-κ (mouse)
 Size : 0.5 mg
 Antibody Protein : ca. 2 mg antibody / ml agarose
 Product form : 1:1 suspension in Dulbecco's PBS(-)

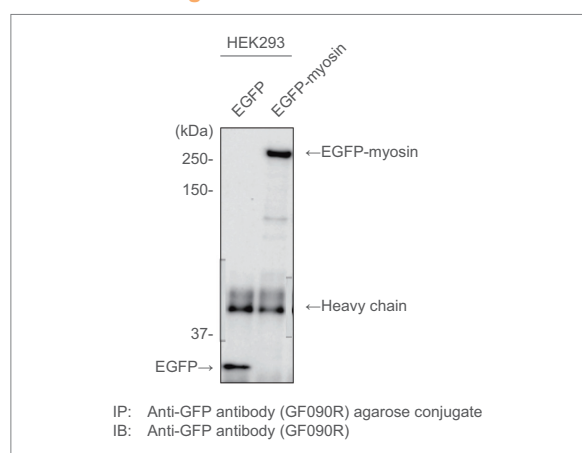
Cells transfected plasmid DNA including c-Myc Tag are lysed, and cell lysate was proceeded to immunoprecipitation with c-Myc-Agarose antibody. The figure above shows the result of western blotting analysis after immunoprecipitation.

Antibody
 Immunoprecipitate: Anti-c-Myc, Agarose conjugate (clone: MC045) (1:500)
 Western blotting: Anti-c-Myc (clone: MC045)

Data courtesy of a customer

• Anti-GFP (Rat IgG2a), Mono (GF090R), CC, Agarose Conjugate

Western Blotting



IP: Anti-GFP antibody (GF090R) agarose conjugate
 IB: Anti-GFP antibody (GF090R)

Samples: HEK-293 cell lysate expressing either EGFP or EGFP-Myosin (1 ml each)

Immunoprecipitation was performed with Anti-GFP agarose conjugate (20 µl) at 4°C for 2 hours.

Data courtesy of Dr. A. Kakizuka, Laboratory of Functional Biology, Graduate School of Biostudies, Kyoto University

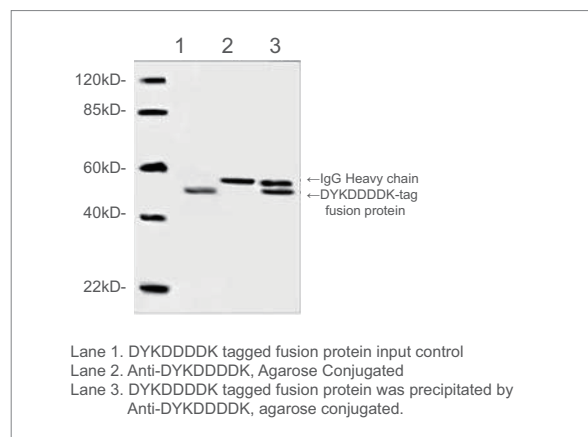
References

Kumeta, M *et al.* Molecular mechanisms underlying nucleocytoplasmic shuttling of actinin-4. *J Cell Sci.* **123**(Pt 7):1020-30 (2010)

Labeled Epitope Tag Antibody (continued)

• Anti-DYKDDDDK (Mouse), Monoclonal Agarose Conjugate

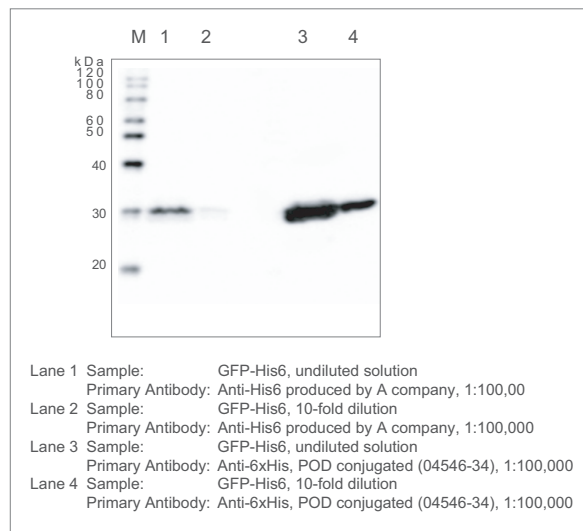
Western Blotting



Clone : 6H8E4
Degree of substitution : Approx. 8.5 mg Anti-DYKDDDDK mAb/ml settled resin
Capacity : > 1 mg/ml settled resin
Product form : 1x PBS containing 50% glycerol

• Anti-6xHis, POD Conjugated

Western Blotting



Clone : HI192
Isotype : IgG1a-κ (mouse)
Product form : Liquid
Immunogen : 6xHis synthetic peptide [HHHHHH]
: conjugated with KLH
Application : Western blot ting 1:1000 - 1:2000
: ELISA 1:30000 - 1:60000

Each concentration of GFP-His6 protein synthesized by in vitro translation were applied 2.5 μl to gel.

• Anti-c-Myc, POD Conjugated

Clone : MC045
Isotype : IgG1a-κ (mouse)
Product form : Liquid
Immunogen : c-Myc synthetic peptide [EQKLISEEDL]
conjugated with KLH
Application : Western blotting 1:1000 - 1:2000
ELISA 1:30000 - 1:60000

• Anti-V5, POD Conjugated

Clone : V5005
Isotype : IgG1-κ (mouse)
Product form : Liquid
Immunogen : V5 synthetic peptide [GKPIPNPLLGLDST]
conjugated with KLH
Application : Western blotting 1:1000 - 1:2000
ELISA 1:8000 - 1:16000

• Anti-GST, POD Conjugated

Clone : GS019
Isotype : IgG2a-κ (mouse)
Product form : Liquid
Immunogen : Glutathione-s-Transferase (GST)
Application : Western blotting 1:4000 - 1:8000
ELISA 1:30000 - 1:60000

• Anti-GFP, POD Conjugated

Clone : GF200
Isotype : IgG1-κ (mouse)
Product form : Liquid
Immunogen : His-GFP (full-length) fusion protein
Application : Western blotting 1:1000 - 1:2000
ELISA 1:2000 - 1:4000

Ordering Information

Product Name	Application	Storage	Product No.	PKG Size
Anti-c-Myc (Mouse IgG1-κ), Monoclonal (MC045), AS, Agarose Conjugate	IP	R	04145-55	500 μg
Anti-GFP (Rat IgG2a), Monoclonal (GF090R), CC, Agarose Conjugate	IP	R	06083-05	500 μg
Anti-DYKDDDDK (Mouse), Monoclonal Agarose Conjugate	IP	F	NU01103	1 ml
Anti-c-Myc (Mouse IgG1-κ), Monoclonal (MC045), AS, POD Conjugated	WB, ELISA	R	04554-24	50 μg
Anti-GST (Mouse IgG2a-κ), Monoclonal (GS019), AS, POD Conjugated	WB, ELISA	R	04559-74	50 μg
Anti-6xHis (Mouse IgG1-κ), Monoclonal (HI192), AS, POD Conjugated	WB, ELISA	R	04546-34	50 μg
Anti-V5 (Mouse IgG1-κ), Monoclonal (V5005), AS, POD Conjugated	WB, ELISA	R	04578-24	50 μg
Anti-GFP (Mouse IgG1-κ), Monoclonal (GF200), AS, POD Conjugated	WB, ELISA	R	05178-34	50 μg

[Storage] R = Refrigerator, F = Freezer